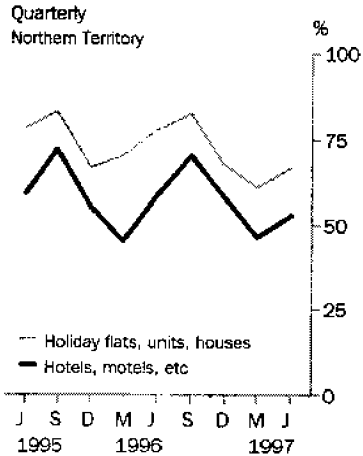


TOURIST ACCOMMODATION

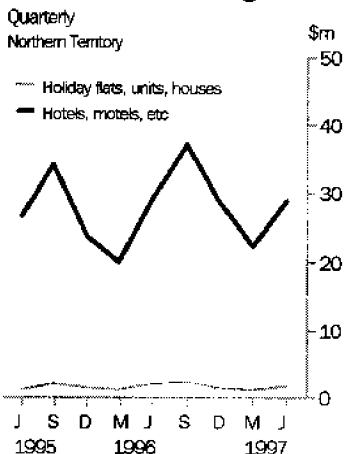
**NORTHERN
TERRITORY**

EMBARGO: 11:30AM (CANBERRA TIME) FRI 5 SEP 1997

Occupancy rates



Accommodation takings



JUNE QTR KEY FIGURES

	Jun Qtr 96	Jun Qtr 97	change
Hotels, motels and guest houses			
Rooms available (no.)	5 572	6 185	11.0 %
Room occupancy rate (%)	58.2	52.7	-5.5 pts
Takings from accommodation (\$'000)	29 176	29 017	-0.5 %
Holiday flats, units and houses			
Units, etc. available (no.)	309	319	3.2 %
Unit occupancy rate (%)	77.8	66.6	-11.2 pts
Takings from accommodation (\$'000)	1 982	1 675	-15.5 %
Caravan parks			
Sites, cabins, etc. available (no.)	8 700	8 903	2.3 %
Site occupancy rate (%)	35.2	32.5	-2.7 pts
Takings from accommodation (\$'000)	4 039	4 140	2.5 %
Visitor hostels			
Bed spaces available (no.)	2 987	3 276	9.7 %
Bed occupancy rate (%)	57.6	46.9	-10.7 pts
Takings from accommodation (\$'000)	2 177	2 053	-5.7 %

JUNE QTR KEY POINTS

CAPACITY INCREASES BUT OCCUPANCY RATES DOWN

- Demand in terms of room nights occupied in Northern Territory hotels, motels and guest houses increased by 0.5% in June quarter 1997 compared with June quarter 1996, while room supply increased by 11.0%. The room occupancy rate therefore fell from 58.2% to 52.7%.
- Most of the capacity increase in hotels, motels and guest houses occurred in Darwin City with the opening of four establishments and expansion of another establishment during the year. Room supply increased by 31.1% to 2,477 while room nights occupied rose by 5.2%. The Darwin City room occupancy rate therefore fell from 74.0% to 59.3%.
- For other accommodation types, capacity available increased while demand fell, resulting in occupancy rate decreases.

ACCOMMODATION TAKINGS DOWN

- Takings from accommodation decreased in June quarter 1997 compared with June quarter 1996 for each establishment type other than caravan parks.

INQUIRIES

- For further information about these and related statistics, contact Glenn Collins on 07 3222 6345, or any ABS Office.

NOTES

FORTHCOMING ISSUES

ISSUE (Quarter)

EXPECTED RELEASE DATE

September 1997

5 December 1997

.....

CHANGES IN THIS ISSUE

There are no changes in this issue.

.....

ZIA ABBASI

Regional Director, Northern Territory

TABLE 1 — SUMMARY OF HOTELS, MOTELS AND GUEST HOUSES WITH FACILITIES, NORTHERN TERRITORY

Particulars	Unit	Quarter ended				Year ended			
		March 1996	June 1996	September 1996	December 1996	March 1997	June 1997	June 1996	June 1997
LICENSED HOTELS WITH FACILITIES									
Establishments	no.	31	31	31	31	32	33
Guest rooms	no.	2,049	2,012	2,045	2,046	2,245	2,386
Bed spaces	no.	6,000	5,905	5,822	5,811	6,156	6,549
Employment (persons)	no.	2,272	2,293	2,328	2,042	2,049	2,217
Room nights occupied	no.	92,445	110,744	131,458	113,611	93,185	114,594	461,350	452,848
Room occupancy rate	per cent	50.4	60.5	69.9	60.4	49.5	52.8	62.1	57.9
Guest nights	no.	151,873	177,458	219,822	181,634	149,687	181,804	755,371	732,947
Bed occupancy rate	per cent	28.4	33.0	41.0	34.0	28.4	30.5	35.1	33.4
Guest arrivals	no.	79,959	86,360	118,561	107,085	85,481	93,076	393,811	404,203
Average length of stay	days	1.9	2.1	1.9	1.7	1.8	2.0	1.9	1.8
Takings from accommodation	\$'000	10,386	13,807	17,160	13,881	11,065	13,997	54,143	56,103
MOTELS AND GUEST HOUSES WITH FACILITIES									
Establishments	no.	67	68	68	67	68	69
Guest rooms	no.	3,589	3,560	3,663	3,598	3,728	3,799
Bed spaces	no.	10,792	10,689	11,120	10,918	11,245	11,389
Employment (persons)	no.	1,300	1,380	1,437	1,266	1,312	1,404
Room nights occupied	no.	134,163	184,574	238,125	188,885	145,334	182,061	706,425	754,405
Room occupancy rate	per cent	41.9	57.0	70.7	57.4	44.7	52.7	55.0	56.4
Guest nights	no.	225,093	328,278	435,132	326,994	248,811	306,845	1,264,168	1,317,782
Bed occupancy rate	per cent	23.3	33.7	42.5	32.7	25.2	29.6	32.9	32.6
Guest arrivals	no.	116,007	168,401	232,121	169,151	122,653	156,474	627,503	680,399
Average length of stay	days	1.9	1.9	1.9	1.9	2.0	2.0	2.0	1.9
Takings from accommodation	\$'000	9,518	15,369	20,087	15,000	11,118	15,020	52,918	61,224
TOTAL HOTELS, MOTELS AND GUEST HOUSES WITH FACILITIES									
Establishments	no.	98	99	99	98	100	102
Guest rooms	no.	5,638	5,572	5,708	5,644	5,973	6,185
Bed spaces	no.	16,792	16,594	16,942	16,729	17,401	17,938
Employment (persons)	no.	3,572	3,673	3,765	3,308	3,361	3,621
Room nights occupied	no.	226,608	295,318	369,583	302,496	238,519	296,655	1,167,775	1,207,253
Room occupancy rate	per cent	45.0	58.2	70.4	58.5	46.4	52.7	57.6	57.0
Guest nights	no.	376,966	505,736	654,954	508,628	398,498	488,649	2,019,539	2,050,729
Bed occupancy rate	per cent	25.1	33.5	42.0	33.2	26.3	29.9	33.7	32.9
Guest arrivals	no.	195,966	254,761	350,682	276,236	208,134	249,550	1,021,314	1,084,602
Average length of stay	days	1.9	2.0	1.9	1.8	1.9	2.0	2.0	1.9
Takings from accommodation	\$'000	19,905	29,176	37,247	28,881	22,183	29,017	107,062	117,328

TABLE 2 — SUMMARY OF CARAVAN PARKS, NORTHERN TERRITORY

Particulars	Unit	Quarter ended				Year ended			
		March 1996	June 1996	September 1996	December 1996	March 1997	June 1997	June 1996	June 1997
SHORT-TERM CARAVAN PARKS									
Establishments	no.	60	60	59	58	57	59
Capacity									
On-site vans	no.	136	125	138	129	126	125
Other powered sites	no.	2,910	2,956	2,941	2,960	2,920	3,005
Unpowered sites	no.	3,157	3,259	3,228	3,071	3,051	3,224
Cabins, etc.	no.	202	207	249	271	215	343
<i>Total capacity</i>	<i>no.</i>	<i>6,405</i>	<i>6,547</i>	<i>6,556</i>	<i>6,431</i>	<i>6,312</i>	<i>6,697</i>
Sites occupied by long-term guests	no.	334	312	315	297	304	321
Other sites permanently reserved	no.	5	8	7	6	7	13
Employment (persons)	no.	267	297	280	263	225	281
Site nights occupied	no.	64,055	187,001	241,756	92,784	62,496	177,913	566,617	574,949
Site occupancy rate	per cent	11.0	31.4	40.1	15.8	11.0	29.2	23.7	24.3
Takings from accommodation	\$'000	1,075	2,944	3,962	1,552	1,060	3,109	9,013	9,683
LONG-TERM CARAVAN PARKS									
Establishments	no.	17	16	17	17	17	17
Capacity									
On-site vans	no.	181	181	178	177	182	184
Other powered sites	no.	1,482	1,405	1,428	1,418	1,434	1,434
Unpowered sites	no.	578	490	506	504	482	480
Cabins, etc.	no.	89	77	82	101	102	108
<i>Total capacity</i>	<i>no.</i>	<i>2,330</i>	<i>2,153</i>	<i>2,194</i>	<i>2,200</i>	<i>2,200</i>	<i>2,206</i>
Sites occupied by long-term guests	no.	648	688	699	608	681	662
Other sites permanently reserved	no.	1	5	3	11	10	11
Employment (persons)	no.	86	84	95	94	85	86
Site nights occupied	no.	69,489	91,729	106,752	75,044	66,533	85,156	350,867	333,485
Site occupancy rate	per cent	32.8	46.8	52.9	37.1	33.6	42.4	41.1	41.5
Takings from accommodation	\$'000	783	1,095	1,357	824	705	1,031	3,964	3,917
TOTAL CARAVAN PARKS									
Establishments	no.	77	76	76	75	74	76
Capacity									
On-site vans	no.	317	306	316	306	308	309
Other powered sites	no.	4,392	4,361	4,369	4,378	4,354	4,439
Unpowered sites	no.	3,735	3,749	3,734	3,575	3,533	3,704
Cabins, etc.	no.	291	284	331	372	317	451
<i>Total capacity</i>	<i>no.</i>	<i>8,735</i>	<i>8,700</i>	<i>8,750</i>	<i>8,631</i>	<i>8,512</i>	<i>8,903</i>
Sites occupied by long-term guests	no.	982	1,000	1,014	905	985	983
Other sites permanently reserved	no.	6	13	10	17	17	24
Employment (persons)	no.	353	381	375	357	310	367
Site nights occupied	no.	133,544	278,730	348,508	167,828	129,029	263,069	917,484	908,434
Site occupancy rate	per cent	16.8	35.2	43.3	21.2	16.8	32.5	28.3	28.6
Takings from accommodation	\$'000	1,858	4,039	5,319	2,376	1,765	4,140	12,977	13,600

TABLE 3 — SUMMARY OF HOLIDAY FLATS, UNITS AND HOUSES, NORTHERN TERRITORY

Particulars	Unit	Quarter ended				Year ended			
		March 1996	June 1996	September 1996	December 1996	March 1997	June 1997	June 1996	June 1997
Letting entities	no.	11	11	12	12	12	12
Flats, units and houses									
Single bedroom	no.	145	151	159	160	157	162
Multiple bedroom	no.	157	158	160	158	158	157
<i>Total flats, units and houses</i>	<i>no.</i>	<i>302</i>	<i>309</i>	<i>319</i>	<i>318</i>	<i>315</i>	<i>319</i>	<i>..</i>	<i>..</i>
Bed spaces	no.	1,195	1,212	1,224	1,223	1,223	1,228
Employment (persons) (a)	no.	67	68	69	70	70	67
Unit nights occupied	no.	19,255	21,882	24,135	19,933	17,173	19,336	81,354	80,577
Unit occupancy rate	per cent	70.1	77.8	82.2	68.1	60.6	66.6	74.5	69.5
Unit lettings	no.	3,381	4,923	6,216	4,391	3,474	4,130	17,238	18,211
Average length of stay	days	5.7	4.4	3.9	4.5	4.9	4.7	4.7	4.4
Takings from accommodation	S'000	1,267	1,982	2,214	1,582	1,227	1,675	6,559	6,697

(a) Employment numbers exclude real estate agents and their employees.

TABLE 4 — SUMMARY OF VISITOR HOSTELS, NORTHERN TERRITORY

Particulars	Unit	Quarter ended				Year ended			
		March 1996	June 1996	September 1996	December 1996	March 1997	June 1997	June 1996	June 1997
Establishments	no.	33	34	34	34	34	34
Bed spaces	no.	2,733	2,987	3,084	3,024	3,166	3,276
Employment (persons)	no.	145	164	168	151	149	159
Guest nights	no.	105,465	156,672	172,938	125,602	107,311	139,877	555,328	545,728
Bed occupancy rate	per cent	42.4	57.6	61.0	45.1	37.7	46.9	52.7	47.7
Guest arrivals	no.	53,320	76,787	85,737	64,661	52,472	68,945	288,929	271,815
Average length of stay	days	2.0	2.0	2.0	1.9	2.0	2.0	1.9	2.0
Takings from accommodation	S'000	1,378	2,177	2,388	1,722	1,517	2,053	7,392	7,679

TABLE 5 — HOTELS, MOTELS AND GUEST HOUSES WITH FACILITIES BY ESTABLISHMENT SIZE,
NORTHERN TERRITORY

Particulars	Establishment size (number of rooms)						Northern Territory
	5-9	10-15	16-25	26-50	51-100	101+	
ESTABLISHMENTS, CAPACITY AND EMPLOYMENT							
<i>June quarter 1996—</i>							
Establishments	6	11	23	18	26	15	99
Guest rooms	41	133	484	690	1,928	2,296	5,572
Bed spaces	114	384	1,507	2,084	5,562	6,943	16,594
Employment (persons)	38	89	223	502	1,348	1,473	3,673
<i>June quarter 1997—</i>							
Establishments	7	11	21	19	26	18	102
Guest rooms	48	137	441	737	1,954	2,868	6,185
Bed spaces	137	411	1,396	2,194	5,335	8,465	17,938
Employment (persons)	42	89	188	485	1,257	1,560	3,621
ROOM NIGHTS OCCUPIED							
<i>June quarter 1996</i>	874	5,322	21,893	31,371	96,991	138,867	295,318
<i>1997—</i>							
April	342	1,365	5,372	8,896	26,409	49,138	91,522
May	498	1,539	6,314	10,188	30,268	50,660	99,467
June	526	1,843	6,955	10,856	32,129	53,357	105,666
<i>June quarter 1997</i>	1,366	4,747	18,641	29,940	88,806	153,155	296,655
ROOM OCCUPANCY RATES (per cent)							
<i>June quarter 1996</i>	23.4	44.0	49.7	50.0	55.3	66.5	58.2
<i>1997—</i>							
April	23.8	33.2	40.6	40.2	45.1	57.1	49.3
May	33.5	36.2	46.2	44.6	50.0	57.0	51.9
June	36.5	44.8	52.6	49.1	54.8	62.0	56.9
<i>June quarter 1997</i>	31.3	38.1	46.5	44.6	49.9	58.7	52.7
GUEST NIGHTS							
<i>June quarter 1996</i>	1,305	9,016	35,890	52,944	167,710	238,871	505,736
<i>1997—</i>							
April	734	2,435	9,344	14,494	45,790	75,904	148,701
May	933	2,762	10,636	17,071	51,956	78,401	161,759
June	1,115	3,329	12,110	19,987	56,998	84,650	178,189
<i>June quarter 1997</i>	2,782	8,526	32,090	51,552	154,744	238,955	488,649
BED OCCUPANCY RATES (per cent)							
<i>June quarter 1996</i>	12.6	25.8	26.2	27.9	33.1	37.8	33.5
<i>1997—</i>							
April	17.9	19.7	22.3	22.0	28.6	29.9	27.6
May	22.0	21.7	24.6	25.1	31.4	29.9	29.1
June	27.1	27.0	28.9	30.4	35.6	33.3	33.1
<i>June quarter 1997</i>	22.3	22.8	25.3	25.8	31.9	31.0	29.9
GUEST ARRIVALS							
<i>June quarter 1996</i>	1,266	6,399	15,490	28,881	80,443	122,282	254,761
<i>1997—</i>							
April	381	1,891	4,163	7,144	22,501	42,854	78,934
May	479	2,052	4,447	8,679	24,192	39,988	79,837
June	656	2,552	5,514	10,124	29,108	42,825	90,779
<i>June quarter 1997</i>	1,516	6,495	14,124	25,947	75,801	125,667	249,550
AVERAGE LENGTH OF STAY (days)							
<i>June quarter 1996</i>	1.0	1.4	2.3	1.8	2.1	2.0	2.0
<i>June quarter 1997</i>	1.8	1.3	2.3	2.0	2.0	1.9	2.0
TAKINGS FROM ACCOMMODATION (\$'000)							
<i>June quarter 1996</i>	38	346	1,272	2,039	7,539	17,943	29,176
<i>1997—</i>							
April	18	92	315	573	2,104	5,842	8,944
May	24	104	377	705	2,459	6,130	9,799
June	25	126	413	784	2,597	6,330	10,274
<i>June quarter 1997</i>	67	322	1,104	2,063	7,160	18,302	29,017

TABLE 6A — HOTELS, MOTELS AND GUEST HOUSES WITH FACILITIES BY STAR GRADING BY STATISTICAL DIVISION,
NORTHERN TERRITORY

Particulars	Darwin (SD)				Northern Territory - Balance (SD)			
	Star grading			Total	Star grading			Total
	2	3, 4 and 5	Ungraded and 1		2	3, 4 and 5	Ungraded and 1	
ESTABLISHMENTS, CAPACITY AND EMPLOYMENT								
<i>June quarter 1996</i>								
Establishments	7	12	9	28	23	25	23	71
Guest rooms	319	1,292	277	1,888	1,034	2,165	485	3,684
Bed spaces	933	3,569	789	5,291	3,050	6,852	1,401	11,303
Employment (persons)	98	1,433	93	1,624	544	1,247	258	2,049
<i>June quarter 1997—</i>								
Establishments	7	12	13	32	22	25	23	70
Guest rooms	320	1,395	762	2,477	1,002	2,221	485	3,708
Bed spaces	958	3,843	1,857	6,658	2,958	6,889	1,433	11,280
Employment (persons)	87	1,277	236	1,600	523	1,264	234	2,021
ROOM NIGHTS OCCUPIED								
<i>June quarter 1996</i>								
	20,595	88,729	17,741	127,065	38,469	114,147	15,637	168,253
<i>1997—</i>								
April	4,971	24,522	8,194	37,687	10,665	39,115	4,055	53,835
May	6,124	27,949	12,445	46,518	11,775	36,505	4,669	52,949
June	6,249	29,191	13,976	49,416	14,086	36,640	5,524	56,250
<i>June quarter 1997</i>	<i>17,344</i>	<i>81,662</i>	<i>34,615</i>	<i>133,621</i>	<i>36,526</i>	<i>112,260</i>	<i>14,248</i>	<i>163,034</i>
ROOM OCCUPANCY RATES (per cent)								
<i>June quarter 1996</i>								
	70.9	75.5	70.4	74.0	40.9	57.9	35.4	50.2
<i>1997—</i>								
April	51.8	58.6	35.8	50.7	35.5	58.7	27.9	48.4
May	61.7	64.6	52.7	60.6	37.9	53.0	31.1	46.1
June	65.1	69.8	61.1	66.5	46.9	55.0	38.0	50.6
<i>June quarter 1997</i>	<i>59.6</i>	<i>64.3</i>	<i>49.9</i>	<i>59.3</i>	<i>40.1</i>	<i>55.5</i>	<i>32.3</i>	<i>48.3</i>
GUEST NIGHTS								
<i>June quarter 1996</i>								
	33,145	142,020	22,854	198,019	71,581	210,081	26,055	307,717
<i>1997—</i>								
April	7,409	34,984	13,052	55,445	19,518	66,656	7,082	93,256
May	9,649	41,073	20,597	71,319	21,109	61,189	8,142	90,440
June	10,765	42,997	21,928	75,690	26,839	64,928	10,732	102,499
<i>June quarter 1997</i>	<i>27,823</i>	<i>119,054</i>	<i>55,577</i>	<i>202,454</i>	<i>67,466</i>	<i>192,773</i>	<i>25,956</i>	<i>286,195</i>
BED OCCUPANCY RATES (per cent)								
<i>June quarter 1996</i>								
	39.0	43.7	31.8	41.1	25.8	33.7	20.4	29.9
<i>1997—</i>								
April	25.8	30.3	23.4	27.8	22.0	32.3	16.5	27.6
May	32.5	34.5	35.8	34.6	23.0	28.7	18.3	25.9
June	37.5	37.3	39.4	37.9	30.2	31.4	25.0	30.3
<i>June quarter 1997</i>	<i>31.9</i>	<i>34.0</i>	<i>32.9</i>	<i>33.4</i>	<i>25.1</i>	<i>30.8</i>	<i>19.9</i>	<i>27.9</i>
GUEST ARRIVALS								
<i>June quarter 1996</i>								
	11,797	62,256	12,004	86,057	48,318	104,196	16,190	168,704
<i>1997—</i>								
April	3,127	16,604	5,552	25,283	12,209	37,370	4,072	53,651
May	3,713	17,122	7,962	28,797	13,463	32,773	4,804	51,040
June	3,823	19,337	8,674	31,834	17,386	35,003	6,556	58,945
<i>June quarter 1997</i>	<i>10,663</i>	<i>53,063</i>	<i>22,188</i>	<i>85,914</i>	<i>43,058</i>	<i>105,146</i>	<i>15,432</i>	<i>163,636</i>
AVERAGE LENGTH OF STAY (days)								
<i>June quarter 1996</i>								
	2.8	2.3	1.9	2.3	1.5	2.0	1.6	1.8
<i>June quarter 1997</i>								
	2.6	2.2	2.5	2.4	1.6	1.8	1.7	1.7
TAKINGS FROM ACCOMMODATION (\$'000)								
<i>June quarter 1996</i>								
	1,443	11,072	910	13,425	2,529	12,366	856	15,751
<i>1997—</i>								
April	295	2,680	554	3,529	727	4,434	253	5,415
May	437	3,139	1,018	4,594	805	4,087	313	5,205
June	454	3,339	1,192	4,985	967	3,953	369	5,289
<i>June quarter 1997</i>	<i>1,187</i>	<i>9,157</i>	<i>2,764</i>	<i>13,108</i>	<i>2,500</i>	<i>12,474</i>	<i>935</i>	<i>15,909</i>

**TABLE 6B—HOTELS, MOTELS AND GUEST HOUSES WITH FACILITIES BY STAR GRADING,
NORTHERN TERRITORY**

Particulars	Licensed hotels with facilities	Motels and guest houses	Star grading					Northern Territory
			1	2	3	4 and 5	Ungraded	
ESTABLISHMENTS, CAPACITY AND EMPLOYMENT								
<i>June quarter 1996—</i>								
Establishments	31	68	14	30	31	6	18	99
Guest rooms	2,012	3,560	329	1,353	2,430	1,027	433	5,572
Bed spaces	5,905	10,689	936	3,983	7,565	2,856	1,254	16,594
Employment (persons)	2,293	1,380	177	642	1,218	1,462	174	3,673
<i>June quarter 1997—</i>								
Establishments	33	69	14	29	31	6	22	102
Guest rooms	2,386	3,799	332	1,322	2,554	1,062	915	6,185
Bed spaces	6,549	11,389	964	3,916	7,891	2,841	2,326	17,938
Employment (persons)	2,217	1,404	180	610	1,289	1,252	290	3,621
ROOM NIGHTS OCCUPIED								
<i>June quarter 1996</i>	110,744	184,574	12,205	59,064	150,067	52,809	21,173	295,318
<i>1997—</i>								
April	34,375	57,147	2,803	15,636	47,823	15,814	9,446	91,522
May	39,325	60,142	2,985	17,899	47,191	17,263	14,129	99,467
June	40,894	64,772	3,884	20,335	49,946	15,885	15,616	105,666
<i>June quarter 1997</i>	114,594	182,061	9,672	53,870	144,960	48,962	39,191	296,655
ROOM OCCUPANCY RATES (per cent)								
<i>June quarter 1996</i>	60.5	57.0	40.8	48.0	67.9	56.5	53.7	58.2
<i>1997—</i>								
April	48.0	50.1	28.1	39.4	62.4	49.6	34.4	49.3
May	53.2	51.1	29.0	43.7	59.6	52.4	49.8	51.9
June	57.1	56.8	39.0	51.3	65.2	49.9	56.9	56.9
<i>June quarter 1997</i>	52.8	52.7	32.0	44.8	62.4	50.7	47.1	52.7
GUEST NIGHTS								
<i>June quarter 1996</i>	177,458	328,278	20,497	104,726	270,198	81,903	28,412	505,736
<i>1997—</i>								
April	54,378	94,323	4,736	26,927	77,357	24,283	15,398	148,701
May	61,658	100,101	5,151	30,758	76,301	25,961	23,588	161,759
June	65,768	112,421	7,400	37,604	83,927	23,998	25,260	178,189
<i>June quarter 1997</i>	181,804	306,845	17,287	95,289	237,585	74,242	64,246	488,649
BED OCCUPANCY RATES (per cent)								
<i>June quarter 1996</i>	33.0	33.7	24.1	28.9	39.2	31.5	24.9	33.5
<i>1997—</i>								
April	27.7	27.6	16.4	22.9	32.7	28.5	22.1	27.6
May	30.4	28.4	17.2	25.3	31.2	29.5	32.7	29.1
June	33.5	32.9	25.6	32.0	35.5	28.2	36.2	33.1
<i>June quarter 1997</i>	30.5	29.6	19.7	26.7	33.1	28.7	30.4	29.9
GUEST ARRIVALS								
<i>June quarter 1996</i>	86,360	168,401	12,369	60,115	124,145	42,307	15,825	254,761
<i>1997—</i>								
April	29,972	48,962	2,796	15,336	41,613	12,361	6,828	78,934
May	30,617	49,220	2,937	17,176	38,044	11,851	9,829	79,837
June	32,487	58,292	4,307	21,209	43,419	10,921	10,923	90,779
<i>June quarter 1997</i>	93,076	156,474	10,040	53,721	123,076	35,133	27,580	249,550
AVERAGE LENGTH OF STAY (days)								
<i>June quarter 1996</i>	2.1	1.9	1.7	1.7	2.2	1.9	1.8	2.0
<i>June quarter 1997</i>	2.0	2.0	1.7	1.8	1.9	2.1	2.3	2.0
TAKINGS FROM ACCOMMODATION (\$'000)								
<i>June quarter 1996</i>	13,807	15,369	545	3,972	15,409	8,029	1,221	29,176
<i>1997—</i>								
April	4,250	4,694	140	1,023	4,874	2,240	667	8,944
May	4,814	4,985	165	1,242	4,795	2,431	1,166	9,799
June	4,932	5,341	201	1,421	5,080	2,212	1,360	10,274
<i>June quarter 1997</i>	13,997	15,020	506	3,687	14,748	6,883	3,193	29,017

TABLE 7 — HOTELS, MOTELS AND GUEST HOUSES WITH FACILITIES BY SELECTED LOCAL GOVERNMENT AREAS,
NORTHERN TERRITORY

Particulars	Darwin City (a)	Alice Springs (T)	Katherine (T)	Tennant Creek (T)
ESTABLISHMENTS, CAPACITY AND EMPLOYMENT				
<i>June quarter 1996 -</i>				
Establishments	28	22	7	4
Guest rooms	1,888	1,563	402	193
Bed spaces	5,291	4,760	1,292	522
Employment (persons)	1,624	760	281	52
<i>June quarter 1997 -</i>				
Establishments	32	22	7	4
Guest rooms	2,477	1,578	409	192
Bed spaces	6,658	4,747	1,273	512
Employment (persons)	1,600	735	302	54
ROOM NIGHTS OCCUPIED				
<i>June quarter 1996</i>	127,065	67,586	20,959	6,475
<i>1997 -</i>				
April	37,687	22,200	6,986	1,879
May	46,518	21,553	7,348	2,213
June	49,416	22,447	8,654	2,443
<i>June quarter 1997</i>	133,621	66,200	22,988	6,535
ROOM OCCUPANCY RATES (per cent)				
<i>June quarter 1996</i>	74.0	47.5	57.3	36.9
<i>1997 -</i>				
April	50.7	46.9	56.9	32.6
May	60.6	44.1	58.0	37.2
June	66.5	47.4	70.5	42.4
<i>June quarter 1997</i>	59.3	46.1	61.8	37.4
GUEST NIGHTS				
<i>June quarter 1996</i>	198,019	116,241	38,883	11,132
<i>1997 -</i>				
April	55,445	35,976	11,045	2,970
May	71,319	34,894	11,513	3,558
June	75,690	39,555	14,349	4,143
<i>June quarter 1997</i>	202,454	110,425	36,907	10,671
BED OCCUPANCY RATES (per cent)				
<i>June quarter 1996</i>	41.1	26.8	33.1	23.4
<i>1997 -</i>				
April	27.8	25.3	28.9	19.3
May	34.6	23.7	29.2	22.4
June	37.9	27.8	37.6	27.0
<i>June quarter 1997</i>	33.4	25.6	31.9	22.9
GUEST ARRIVALS				
<i>June quarter 1996</i>	86,057	51,907	19,988	8,915
<i>1997 -</i>				
April	25,283	15,854	6,013	2,369
May	28,797	14,091	6,546	2,784
June	31,834	17,477	8,011	3,358
<i>June quarter 1997</i>	85,914	47,422	20,570	8,511
AVERAGE LENGTH OF STAY (days)				
<i>June quarter 1996</i>	2.3	2.2	1.9	1.2
<i>June quarter 1997</i>	2.4	2.3	1.8	1.3
TAKINGS FROM ACCOMMODATION (\$'000)				
<i>June quarter 1996</i>	13,425	4,817	1,164	405
<i>1997 -</i>				
April	3,529	1,566	394	118
May	4,594	1,572	419	140
June	4,985	1,586	535	154
<i>June quarter 1997</i>	13,108	4,724	1,348	412

(a) As there are no in-scope establishments outside the Darwin City boundaries, data for Darwin Statistical Division are the same as for Darwin City.

TABLE 8 — HOLIDAY FLATS, UNITS AND HOUSES BY SELECTED AREAS, NORTHERN TERRITORY

<i>Particulars</i>	<i>Darwin (C)-Inner</i>	<i>Balance</i>	<i>Northern Territory</i>
LETTING ENTITIES, CAPACITY AND EMPLOYMENT			
<i>June quarter 1996—</i>			
Letting entities	4	7	11
Flats, units and houses			
Single bedroom	14	137	151
Multiple bedroom	88	70	158
<i>Total flats, units and houses</i>	<i>102</i>	<i>207</i>	<i>309</i>
Bed spaces	382	830	1,212
Employment (persons) (a)	20	48	68
<i>June quarter 1997—</i>			
Letting entities	4	8	12
Flats, units and houses			
Single bedroom	14	148	162
Multiple bedroom	87	70	157
<i>Total flats, units and houses</i>	<i>101</i>	<i>218</i>	<i>319</i>
Bed spaces	378	850	1,228
Employment (persons) (a)	21	46	67
UNIT NIGHTS OCCUPIED			
<i>June quarter 1996</i>	<i>7,233</i>	<i>14,649</i>	<i>21,882</i>
<i>1997—</i>			
April	1,682	4,348	6,030
May	2,030	4,698	6,728
June	2,036	4,542	6,578
<i>June quarter 1997</i>	<i>5,748</i>	<i>13,588</i>	<i>19,336</i>
UNIT OCCUPANCY RATES (per cent)			
<i>June quarter 1996</i>	<i>77.9</i>	<i>77.8</i>	<i>77.8</i>
<i>1997—</i>			
April	55.5	66.5	63.0
May	64.8	69.5	68.0
June	67.2	69.4	68.7
<i>June quarter 1997</i>	<i>62.5</i>	<i>68.5</i>	<i>66.6</i>
UNIT LETTINGS			
<i>June quarter 1996</i>	<i>1,284</i>	<i>3,639</i>	<i>4,923</i>
<i>1997—</i>			
April	289	973	1,262
May	376	1,007	1,383
June	427	1,058	1,485
<i>June quarter 1997</i>	<i>1,092</i>	<i>3,038</i>	<i>4,130</i>
AVERAGE LENGTH OF STAY (days)			
<i>June quarter 1996</i>	<i>5.6</i>	<i>4.0</i>	<i>4.4</i>
<i>1997—</i>			
April	5.8	4.5	4.8
May	5.4	4.7	4.9
June	4.8	4.3	4.4
<i>June quarter 1997</i>	<i>5.3</i>	<i>4.5</i>	<i>4.7</i>
TAKINGS FROM ACCOMMODATION (\$'000)			
<i>June quarter 1996</i>	<i>702</i>	<i>1,280</i>	<i>1,982</i>
<i>1997—</i>			
April	162	299	461
May	217	397	613
June	228	373	601
<i>June quarter 1997</i>	<i>606</i>	<i>1,069</i>	<i>1,675</i>

(a) Employment numbers exclude real estate agents and their employees.

TABLE 9 — CARAVAN PARKS BY STATISTICAL AREA AND TYPE, NORTHERN TERRITORY

Particulars	Darwin (SD) and Alligator (SSD)	Darwin Rural Areas and Daly (SSDs)	Lower Top End Northern Territory (SSD)	Barkly (SSD)	Central Northern Territory (SSD)	Northern Territory		Total
						Short-term parks	Long-term parks	
ESTABLISHMENTS, CAPACITY AND EMPLOYMENT								
<i>June quarter 1996—</i>								
Establishments	9	21	22	9	15	60	16	76
Capacity								
On-site vans	31	162	14	19	80	125	181	306
Other powered sites	1,241	914	839	346	1,021	2,956	1,405	4,361
Unpowered sites	591	485	952	383	1,338	3,259	490	3,749
Cabins, flats, etc.	30	78	54	33	89	207	77	284
<i>Total capacity</i>	<i>1,893</i>	<i>1,639</i>	<i>1,859</i>	<i>781</i>	<i>2,528</i>	<i>6,547</i>	<i>2,153</i>	<i>8,700</i>
Sites occupied by long-term guests	326	341	77	22	234	312	688	1,000
Other sites permanently reserved	4	1	3	3	2	8	5	13
Employment (persons)	57	73	124	45	82	297	84	381
<i>June quarter 1997—</i>								
Establishments	9	21	22	9	15	59	17	76
Capacity								
On-site vans	27	174	11	18	79	125	184	309
Other powered sites	1,263	938	801	351	1,086	3,005	1,434	4,439
Unpowered sites	514	479	1,013	373	1,325	3,224	480	3,704
Cabins, flats, etc.	30	88	190	44	99	343	108	451
<i>Total capacity</i>	<i>1,834</i>	<i>1,679</i>	<i>2,015</i>	<i>786</i>	<i>2,589</i>	<i>6,697</i>	<i>2,206</i>	<i>8,903</i>
Sites occupied by long-term guests	303	333	81	27	239	321	662	983
Other sites permanently reserved	—	2	10	8	4	13	11	24
Employment (persons)	55	88	98	47	79	281	86	367
SITE NIGHTS OCCUPIED								
<i>June quarter 1996</i>	<i>70,474</i>	<i>58,017</i>	<i>46,295</i>	<i>15,411</i>	<i>88,533</i>	<i>187,001</i>	<i>91,729</i>	<i>278,730</i>
<i>1997—</i>								
April	16,939	14,984	8,753	3,329	20,176	39,524	24,657	64,181
May	23,557	17,759	14,643	5,347	24,730	58,278	27,758	86,036
June	31,436	22,827	20,333	7,200	31,056	80,111	32,741	112,852
<i>June quarter 1997</i>	<i>71,932</i>	<i>55,570</i>	<i>43,729</i>	<i>15,876</i>	<i>75,962</i>	<i>177,913</i>	<i>85,156</i>	<i>263,069</i>
SITE OCCUPANCY RATES (per cent)								
<i>June quarter 1996</i>	<i>40.9</i>	<i>38.9</i>	<i>27.4</i>	<i>21.7</i>	<i>38.5</i>	<i>31.4</i>	<i>46.8</i>	<i>35.2</i>
<i>1997—</i>								
April	30.8	29.7	14.5	14.1	26.0	19.7	37.3	24.0
May	41.4	34.1	23.4	21.9	30.8	28.1	40.6	31.2
June	57.1	45.3	33.6	30.5	40.0	39.9	49.5	42.3
<i>June quarter 1997</i>	<i>43.1</i>	<i>36.4</i>	<i>23.8</i>	<i>22.2</i>	<i>32.2</i>	<i>29.2</i>	<i>42.4</i>	<i>32.5</i>
TAKINGS FROM ACCOMMODATION (\$'000)								
<i>June quarter 1996</i>	<i>671</i>	<i>817</i>	<i>725</i>	<i>251</i>	<i>1,575</i>	<i>2,944</i>	<i>1,095</i>	<i>4,039</i>
<i>1997—</i>								
April	195	212	142	55	421	730	295	1,025
May	256	260	244	86	514	1,021	338	1,359
June	321	333	320	124	657	1,357	398	1,756
<i>June quarter 1997</i>	<i>773</i>	<i>805</i>	<i>706</i>	<i>265</i>	<i>1,591</i>	<i>3,109</i>	<i>1,031</i>	<i>4,140</i>

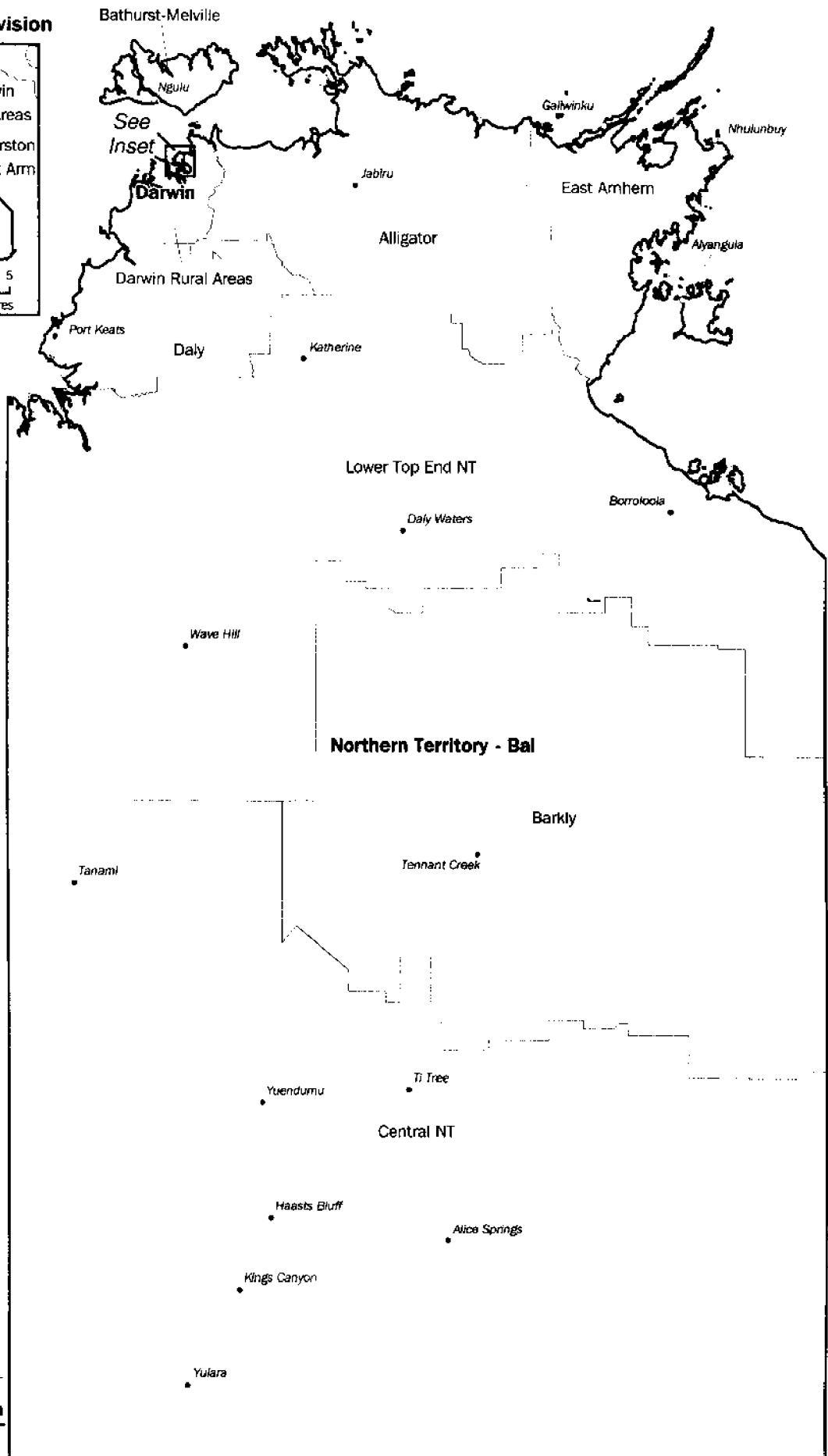
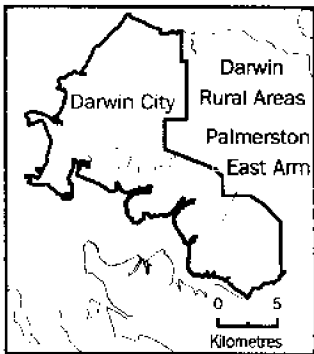
TABLE 10 — VISITOR HOSTELS BY STATISTICAL DIVISION AND SELECTED AREAS, NORTHERN TERRITORY

Particulars	Northern Territory - Balance (SD)				Total	Northern Territory
	Darwin (SD)	Katherine (T)	Alice Springs (T)	Balance		
ESTABLISHMENTS, CAPACITY AND EMPLOYMENT						
<i>June quarter 1996—</i>						
Establishments	10	3	8	13	24	34
Bed spaces	1,049	185	970	783	1,938	2,987
Employment (persons)	58	8	46	52	106	164
<i>June quarter 1997—</i>						
Establishments	10	3	8	13	24	34
Bed spaces	1,282	187	916	891	1,994	3,276
Employment (persons)	66	10	42	41	93	159
GUEST NIGHTS						
<i>June quarter 1996</i>	<i>67,434</i>	<i>9,489</i>	<i>49,989</i>	<i>29,760</i>	<i>89,238</i>	<i>156,672</i>
<i>1997—</i>						
April	16,432	3,291	13,045	9,346	25,682	42,114
May	20,509	4,053	13,703	9,391	27,147	47,656
June	21,076	4,205	13,830	10,996	29,031	50,107
<i>June quarter 1997</i>	<i>58,017</i>	<i>11,549</i>	<i>40,578</i>	<i>29,733</i>	<i>81,860</i>	<i>139,877</i>
BED OCCUPANCY RATES (per cent)						
<i>June quarter 1996</i>	<i>70.6</i>	<i>56.4</i>	<i>56.6</i>	<i>41.8</i>	<i>50.6</i>	<i>57.6</i>
<i>1997—</i>						
April	42.7	58.7	47.5	35.0	42.9	42.9
May	51.6	69.9	48.3	34.0	43.9	46.9
June	54.8	75.0	50.3	41.1	48.5	51.0
<i>June quarter 1997</i>	<i>49.7</i>	<i>67.9</i>	<i>48.7</i>	<i>36.7</i>	<i>45.1</i>	<i>46.9</i>
GUEST ARRIVALS						
<i>June quarter 1996</i>	<i>27,136</i>	<i>5,274</i>	<i>21,918</i>	<i>22,459</i>	<i>49,651</i>	<i>76,787</i>
<i>1997—</i>						
April	6,927	2,284	4,977	6,546	13,807	20,734
May	8,631	2,865	5,085	6,227	14,177	22,808
June	8,727	3,054	5,852	7,770	16,676	25,403
<i>June quarter 1997</i>	<i>24,285</i>	<i>8,203</i>	<i>15,914</i>	<i>20,543</i>	<i>44,660</i>	<i>68,945</i>
AVERAGE LENGTH OF STAY (days)						
<i>June quarter 1996</i>	<i>2.5</i>	<i>1.8</i>	<i>2.3</i>	<i>1.3</i>	<i>1.8</i>	<i>2.0</i>
<i>1997—</i>						
April	2.4	1.4	2.6	1.4	1.9	2.0
May	2.4	1.4	2.7	1.5	1.9	2.1
June	2.4	1.4	2.4	1.4	1.7	2.0
<i>June quarter 1997</i>	<i>2.4</i>	<i>1.4</i>	<i>2.5</i>	<i>1.4</i>	<i>1.8</i>	<i>2.0</i>
TAKINGS FROM ACCOMMODATION (\$'000)						
<i>June quarter 1996</i>	<i>899</i>	<i>122</i>	<i>619</i>	<i>537</i>	<i>1,278</i>	<i>2,177</i>
<i>1997—</i>						
April	204	39	161	189	389	592
May	270	50	166	221	437	707
June	291	52	170	240	462	754
<i>June quarter 1997</i>	<i>765</i>	<i>141</i>	<i>497</i>	<i>650</i>	<i>1,288</i>	<i>2,053</i>

Statistical Divisions and Statistical Subdivisions, Northern Territory, 1996

Inset

Darwin Statistical Division



Statistical Subdivision Daly

Statistical Division **Darwin**



EXPLANATORY NOTES

INTRODUCTION

1 This publication contains data for the Northern Territory from a quarterly survey of tourist accommodation establishments.

SCOPE

2 Tourist accommodation establishments currently included in the survey comprise two groups:

- Establishments which provide predominantly short-term accommodation (i.e. for periods of less than 2 months) to the general public. These include:
 - *Hotels, motels and guest houses, with facilities* being hotels licensed to operate a public bar and motels, private hotels and guest houses all of which provide a bath (or shower) and toilet in most guest rooms and have breakfast available for guests. NOTE: From December quarter 1993, hotel, motel and guest house establishments with fewer than five rooms have been formally excluded from the scope of this statistical collection.
 - *Holiday flats, units and houses* (excluding establishments predominantly operated on a time share basis) which are operated by owners, managers or real estate agents who have sole letting rights to at least five flats, units or houses for short-term letting. They are mainly self-contained in terms of cooking, bath (or shower) and toilet facilities and do not have breakfast available for guests. Data for holiday flats, units and houses include short-term owner occupation as well as paying guest occupation.
 - *Visitor hostels* which provide accommodation to visitors on a bed basis (rather than by the room). This category does not include establishments providing charity type accommodation (e.g. Salvation Army hostels) nor hotels, motels and guest houses without in-room facilities which provide accommodation on a per room basis.
- *Caravan parks* which provide either predominantly short-term (i.e. for periods of less than 2 months) or predominantly long-term (i.e. for periods of 2 months or more) accommodation to the general public and which provide powered sites for caravans and toilet, shower and laundry facilities for guests.

3 Data collected and published for each type of establishment (other than holiday flats, units and houses) include both long-term and short-term guests at these establishments.

4 Establishments which provide more than one type of accommodation (e.g. a motel with attached caravan park) are treated as two or more separate establishments. However, self-contained units, flats, cabins, etc. attached to hotels, motels or to caravan parks are included in the capacity for those establishments and not treated as separate holiday flat, unit or house establishments.

AUSTRALIAN STANDARD

GEOGRAPHICAL CLASSIFICATION

5 Statistics presented in this publication have been classified according to the Australian Standard Geographical Classification (ASGC), Edition 1996. This classification incorporates a number of hierarchic structures of geographic areas. The appropriate spatial units of the main structure of the ASGC used in this publication are defined as follows.

EXPLANATORY NOTES



AUSTRALIAN STANDARD
GEOGRAPHICAL CLASSIFICATION
continued

- Statistical Local Areas (SLAs) are legal Local Government Areas or equivalent spatial units which serve as the smallest type of spatial unit considered appropriate for the presentation of statistics and add, without gaps or overlaps, to;
- Statistical Subdivisions (SSDs) which in turn represent another, higher hierarchic level and add, without gaps or overlaps, to;
- Statistical Divisions (SDs) which in turn add, without gaps or overlaps, to: *The Northern Territory.*

For more detailed information, refer to the ASGC (1216.0).

The Northern Territory comprises three SDs, i.e. Darwin, Northern Territory Balance, and Offshore Areas and Migratory. Only the first two of these units are appropriate for the presentation of statistics in this publication and together add to the Northern Territory.

UNPUBLISHED STATISTICS

6 The ABS may make available on request certain unpublished tourist accommodation statistics. A charge may be made for this information.

RELATED PUBLICATIONS

7 Publications for Australia, and each State and Territory, are released by the respective offices of the ABS. Tourist accommodation statistics for past quarters are available on request. Other ABS publications which may be of interest include:

- *Directory of Tourism Statistics* (1130.0) (irregular: latest issue; 1997)
- *Overseas Arrivals and Departures, Australia* (3401:0) (issued monthly)
- *Tourism Indicators, Australia* (8634.0) (issued quarterly)
- *Tourist Accommodation, Australia* (8635.0) (issued quarterly)

8 Current publications produced by the ABS are listed in the *Catalogue of Publications and Products* (1101.0). The ABS also issues the *Release Advice* (1105.0) on Tuesdays and Fridays which lists publications to be released in the next few days. Both the *Catalogue* and *Release Advice* are available from any ABS office.

EFFECTS OF ROUNDING

9 Where figures have been rounded, discrepancies may occur between totals and the sums of the component items.

SYMBOLS AND OTHER USAGES

- .. not applicable
- nil or rounded to zero
- n.a. not available
- n.p. not available for publication but included in totals where applicable
- r revised
- (T) Town

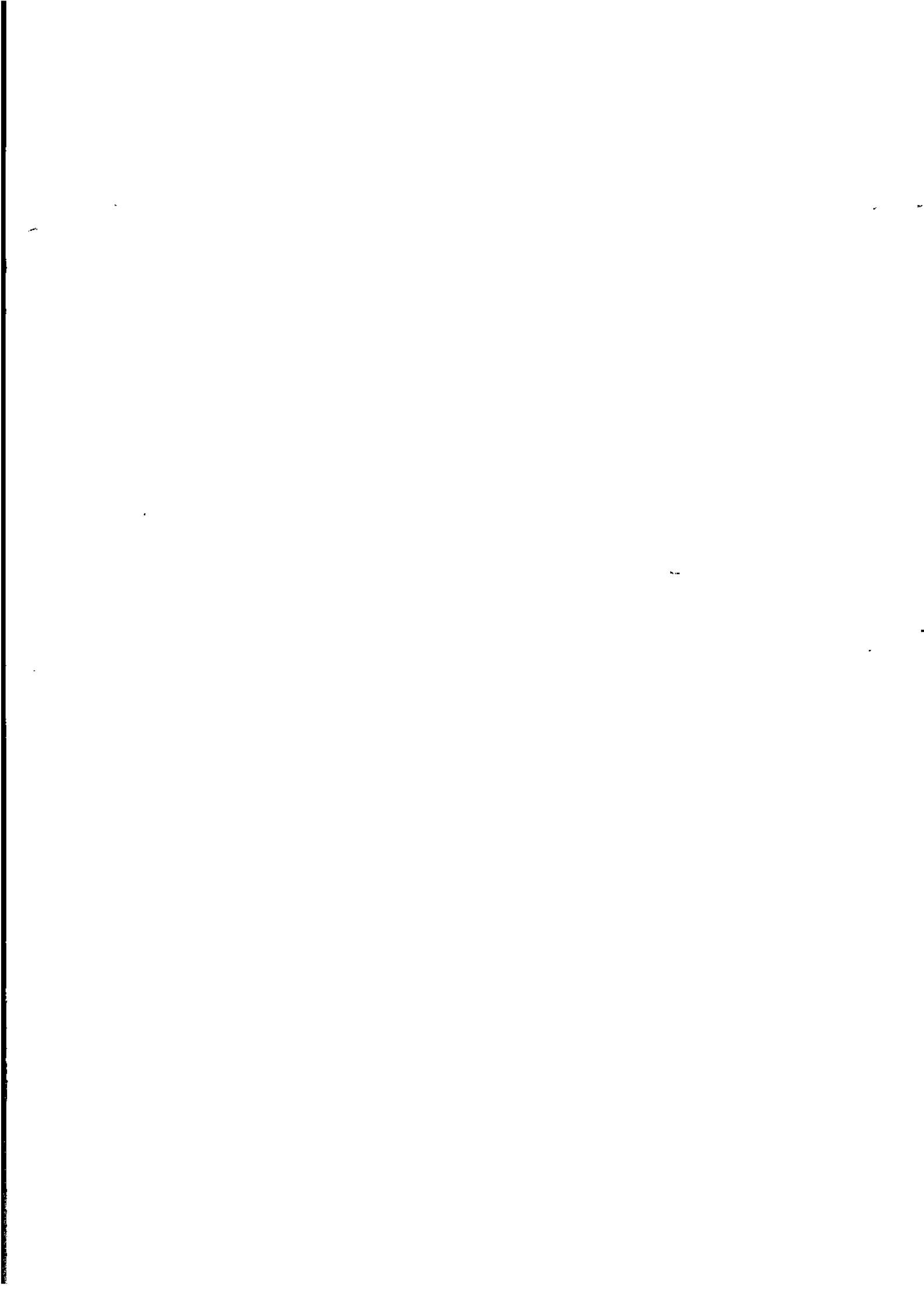


G L O S S A R Y

Average length of stay	<p>Average length of stay is expressed in numbers of days and calculated:</p> <ul style="list-style-type: none"> ▪ for hotels, motels and guest houses, by dividing <i>Guest nights</i> by <i>Guest arrivals</i> and ▪ for holiday flats, units and houses, by dividing <i>Unit nights occupied</i> by <i>Unit lettings</i>.
Bed spaces	<p>Three-quarter beds are counted as one bed space; double beds as two bed spaces. Cots are excluded.</p>
Capacity	<p>Capacity in terms of <i>Guest rooms</i>, <i>Bed spaces</i>, <i>Holiday units</i> or <i>Caravan park sites</i>, etc. is the maximum number available to accommodate paying guests during the survey period. Capacity closed temporarily for seasonal reasons is included.</p>
Caravan park capacity	<p>The total number of <i>On-site vans</i>, <i>Other powered sites</i>, <i>Unpowered sites</i> and <i>Cabins</i>, etc.</p>
Employment	<p>The number of persons working at accommodation establishments at the end of the survey period (including working proprietors and those working on other than accommodation activities).</p>
Establishments	<p>For hotels, motels and guest houses, caravan parks and visitor hostels, the number of establishments within the scope of the survey which operated for any part of the survey period, or which closed temporarily for the quarter for seasonal reasons.</p>
Guest arrivals	<p>The total number of paying guests counted only on the first night they stayed at the accommodation establishment.</p>
Letting entities	<p>For holiday flats, units and houses, the number of owners, managers or real estate agents within the scope of the survey who operated for any part of the survey period.</p>
Occupancy	<p>Occupancy in terms of <i>Room nights</i>, <i>Unit nights</i> or <i>Site nights occupied</i> refers to the total number of nights each guest room, holiday unit or caravan park site, etc. was occupied during the survey period. NOTE: From September quarter 1992, caravan park sites, etc. permanently reserved for 2 months or more at the end of the survey period but only casually occupied by their tenants have been recorded continuously as <i>Site nights occupied</i> irrespective of whether the tenants of individual sites were in residence on any particular night.</p> <p>Occupancy in terms of <i>Guest nights</i> refers to the total number of nights each paying guest stayed during the survey period.</p>
Occupancy rates	<p><i>Occupancy rates</i> represent occupancy expressed as a percentage of total capacity available during the survey period, e.g.</p> $\text{Room occupancy rate (\%)} \text{ for the period} = \frac{\text{Room nights occupied}}{(\text{Guest rooms}) \times (\text{No. of days in the period})} \times 100$ <p>providing that, for establishments closing (other than for seasonal reasons) or opening during the survey period, the denominator of the above expression includes only operating periods.</p>

GLOSSARY

- Other sites permanently reserved** The total number of powered and unpowered sites, on-site vans and cabins, etc. continuously let for 2 months or more by the end of the survey period to tenants who occupy the sites only on a casual or sporadic basis. Separate data for this item are available only from September quarter 1992.
- Room nights available** The number of guest rooms available multiplied by the number of days for which they were available during the survey period. For establishments closing (other than for seasonal reasons) or opening during the survey period, operating periods only are included.
- Sites occupied by long-term guests** The total number of sites, etc. occupied at the end of the survey period by guests who have stayed continuously for 2 months or more.
- Star grading** The grading of hotels and motels with facilities based on the classification system used by members of the Australian Automobile Association (AAA). The gradings are allocated according to a points system based on the amenities and facilities available to guests. Details of the grading scheme are contained in the RACV-RAASA members' publication *Accommodation Australia*, or the individual tour guides produced by members of the AAA. For the purpose of classifying establishments to a star grading in this publication, 'half' star gradings are ignored (e.g. a two and a half star grading has been shown as two star).
- Takings from accommodation** Revenue received from the provision of accommodation. Takings from meals are excluded. Takings from accommodation for each month generally represent the takings received during that month. Where payments are received in advance of, or after, the provision of accommodation to guests, the monthly figure for takings from accommodation may not necessarily bear a direct relationship to the number of guests accommodated during the month. Rental and storage fees paid to caravan parks for the keeping of private vans in parks are included in the takings of the month they are received.
- Unit lettings** The total number of times a holiday flat, unit or house was occupied by a new tenant, counted only on the first night it was occupied by the new tenant.



FOR MORE INFORMATION...

The ABS publishes a wide range of information on Australia's economic and social conditions. A catalogue of publications and products is available from any of our offices (see below).

INFORMATION CONSULTANCY SERVICES

Information tailored to special needs of clients can be obtained from the Information Consultancy Service available at ABS Offices (see below).

ABS PRODUCTS

A large number of ABS products is available from the ABS Bookshops (see below). The ABS also provides a subscription service – you can telephone the ABS Subscription Service Australia wide toll free on 1800 0206 08.

ELECTRONIC SERVICES

A large range of data is available via on-line services, diskette, magnetic tape, tape cartridge and CD ROM. For more details about our electronic data services, contact any ABS office (see below) or e-mail us at:

- client.services@abs.gov.au

GENERAL SALES AND INQUIRIES

- Sydney 02 9268 4611
 - Melbourne 03 9615 7755
 - Brisbane 07 3222 6351
 - Perth 08 9360 5140
 - Adelaide 08 8237 7100
 - Hobart 03 6222 5800
 - Darwin 08 8943 2111
 - Canberra 02 6252 6627
- Information Services, ABS
PO Box 10, Belconnen ACT 2616



2863570006975

ISSN 0157-1354

RFP \$16.00